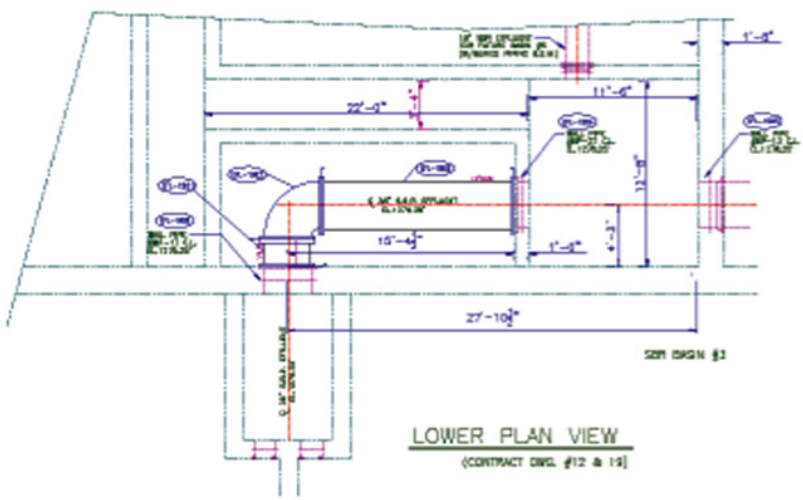


TOP PLAN VIEW
(CONTRACT DWG. #12 & 13)



LOWER PLAN VIEW
(CONTRACT DWG. #12 & 13)

NO.	QUANTITY	SIZE	TYPE	CL.	NOTE	LENGTH
PS-1040	1	12"	SP F x PC	S.L.	0.53 3/12 FLD.	6'-0 3/4"
PS-1041	2	12"	SP FLD. W/ BOMB	S.L.	C-110	12'-0"
PS-1042	2	12"	SP F x F	S.L.	0.53	18'-0"
PS-1043	1	12"	SP F x PC	S.L.	0.53	18'-0"
PS-1044	1	12"	SP F x PC	S.L.	0.53 3/12 FLD.	3'-0 3/4"
PS-1045	1	12"	SP F x PC	S.L.	0.53	12'-0"
PS-1046	1	12"	SP F x PC	S.L.	0.53	7'-0"
PS-1047	1	12"	SP F x F	S.L.	0.53	18'-0"
PS-1048	1	12"	SP F x PC	S.L.	0.53	3'-0"
PS-1049	2	12"	BALL SLIDE #85-13 (M)			1'-0 1/2" S.L.
PS-1050	2	12"	BALL SLIDE #85-14 (M)			1'-0 1/2" S.L.
PS-1051	-	-	-	-	-	-
PS-1052	11	12"	WADSWORTH (D.L.T.) W/ SPIN GARDT			1'-0"
PS-1053	1	36"	BALL PFC #89-11 (M)			1'-0 1/2" S.L.
PS-1054	1	36"	SP F x F	CL.	0.53	1'-0 3/4"
PS-1055	1	36"	SP FLD. W/ BOMB	S.L.	C-110	24'-0"
PS-1056	1	36"	SP F x F	CL.	0.53	17'-0 1/4"
PS-1057	1	36"	BALL PFC #89-21 (M)			1'-0 1/2" S.L.
PS-1058	1	36"	BALL PFC #89-11 (M)			1'-0 1/2" S.L.
PS-1059	1	36"	BALL PFC #89-2 (M)			1'-0 1/2" S.L.
PS-1060	-	-	-	-	-	-
PS-1061	2	36"	WADSWORTH (D.L.T.) W/ SPIN GARDT			1'-0"
PS-1062	2	36"	WADSWORTH (D.L.T.) W/ SPIN GARDT			1'-0"
PS-1063	1	3"	BALL PFC #89-16 (M)			1'-0 1/2" S.L.
PS-1064	1	18"	BALL PFC #89-06 (M)			1'-0 1/2" S.L.

*CHECK PITCH TO BALL PFC AND BALL SLIDE SCHEDULE.
 D.O.M. LOADS
 PC = PROCESS AIR
 S.L. = SLOPE & DISINFECTED BATCH EFFLUENT.

NOTES
 REFER THIS WITH CONTRACT DWG. #10, 11, 12, 13, 14 & #5-15-19, 5-20

NO.	REVISION	DATE	BY

TRUMBULL INDUSTRIES
 1040 N. Wetzel Rd., P.O. Box 1596, Youngstown, Oh 44501
 T 330 744-3333 FAX (330) 747-3216

WADSWORTH AREA AUTHORITY
 WADSWORTH PIPING-SWAGE TREATMENT PLANT
 S.B.R. PROCESS AIR SUPPLY & S.B.R. OUTLET (L.V. BUILDING)

DATE: 10-03-03 SCALE: 1/16" = 1'-0" JOB NAME: WADSWORTH/DALRYM
 CHECKED BY: CAC FILE DWG NO. INT-19-10f1
 DRAWN BY: JSCM/TD REV: 02

FOR PERMITTING ONLY
 NOT 3-31-06